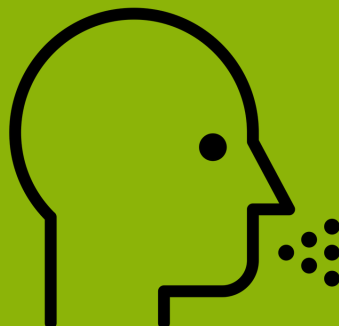


## PAIN RELIEVERS<sup>1</sup>

- **Ibuprofen (Advil, Motrin):** Taking with 3+ drinks can cause bleeding in your stomach and intestine
- **Acetaminophen (Tylenol):** Taking with any amount of alcohol can hurt your liver function
- **Naproxen (Aleve):** Taking with 3+ drinks can cause bleeding in your stomach and intestine and can increase drowsiness
- **Aspirin:** Taking with any amount of alcohol can hurt your liver and increase the risk of nausea, vomiting, stomach pain, and heartburn

## ALLERGY/INSOMNIA MEDICATIONS<sup>1</sup>

- **Diphenhydramine (Benadryl, Advil PM, zzzQuil), Doxylamine (NyQuil), Cetirizine (Zyrtec):** Taking with any amount of alcohol can cause you to feel drowsy



# DID YOU KNOW THAT A LOT OF COMMON MEDICATIONS CAN CAUSE NEGATIVE SIDE EFFECTS WHEN MIXED WITH ALCOHOL?

If you are concerned about the side effects of a medicine you are taking mixing with alcohol, contact your healthcare provider or SHAC for more information

## COMMON ANTIBIOTICS<sup>1</sup>

- **Metronidazole, Tinidazole:** Taking with any amount of alcohol can cause nausea, vomiting, stomach cramps, a headache, flushing, and sweating



## COMMON ANTIDEPRESSANTS<sup>1</sup>

- **Escitalopram (Lexapro), Citalopram (Celexa), Fluoxetine (Prozac, Sarafem):** Taking with any amount of alcohol can increase drowsiness and may make you feel more depressed or anxious
- **Sertraline (Zoloft):** Taking with any amount of alcohol can increase drowsiness and impairment and may make you feel more depressed or anxious