

Facilities Master Planning April, 2014



Strategic Plan

Critical Next Steps to Secure Carleton's Continued Distinction

We have settled upon a limited set of initiatives which, taken together, are a concrete and focused plan for Carleton's future. This plan has six core ideas, which are described in detail in the document:

- 1. Prepare students more robustly for fulfilling post-graduation lives and careers**
- 2. Enhance our curriculum to improve liberal arts teaching and learning**
- 3. Strengthen the socio-economic diversity of our student body**
- 4. Maintain a self-sustaining economy with a growing endowment per student**
- 5. Make focused investments in facilities that directly advance our mission**
- 6. Embrace collaborative opportunities with other institutions to enhance our academic programs and save costs**

Facilities Master Planning Committees

Core Committee

Fernan Jaramillo, Co-Chair

Fred Rogers, Co-Chair

Joe Chihade

Gillian Fitz '14

Nathan Grawe

Clara Hardy

Gayle McJunkin

Steve Richardson

Melinda Russell

Julie Thornton

Gerald Young

Matt Weinstein '14

Science Committee

Joe Chihade, Co-Chair

Fernan Jaramillo, Co-Chair

Cam Davidson

Melissa Eblen-Zayas

Eric Egge

Emily Kolenbrander '14

David Musicant

Tsegaye Nega

Mija Van der Wege

Mark Zach

Music/Public Events Venues Committee

Fred Rogers, Co-Chair

Melinda Russell, Co-Chair

Lawrence Burnett

Stella Fritzell '15

Carolyn Fure-Slocum

Noel Ponder

Kate Richards '14

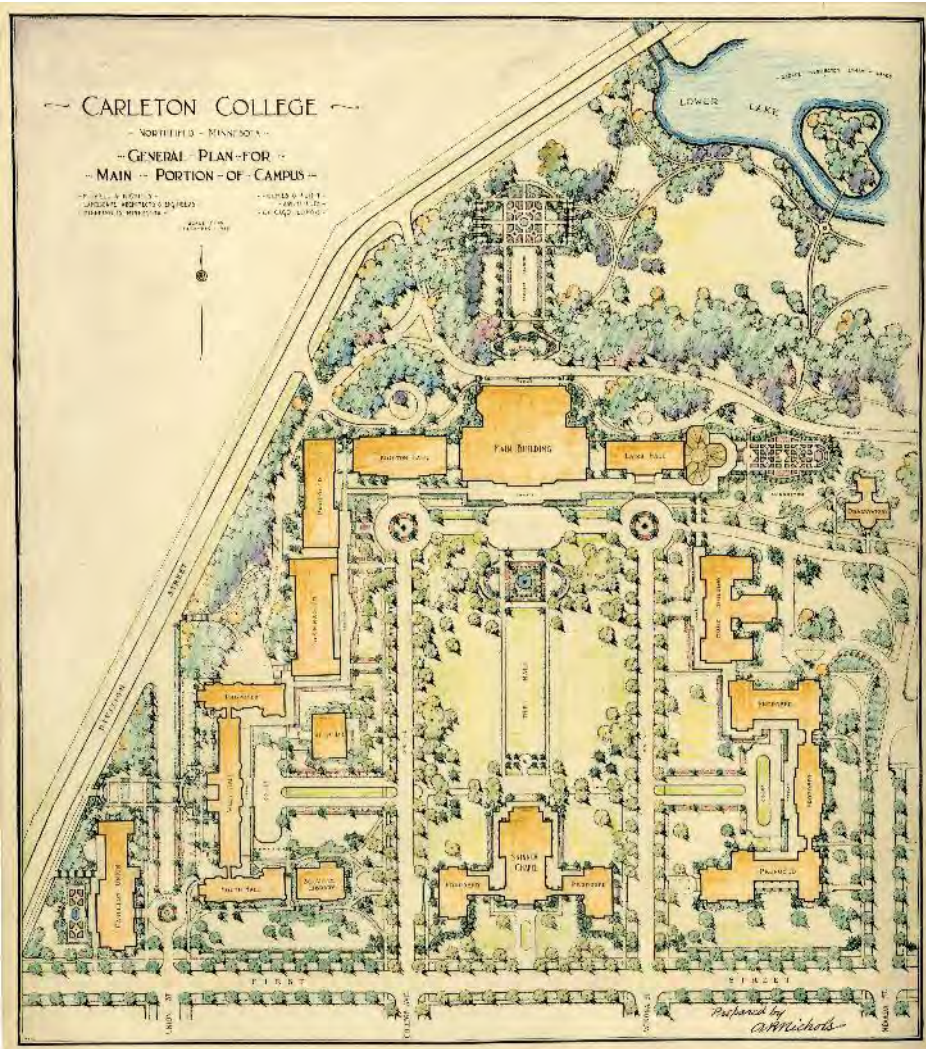
Steve Richardson

Ron Rodman

Paul Thiboutot

David Tompkins

Major Goals

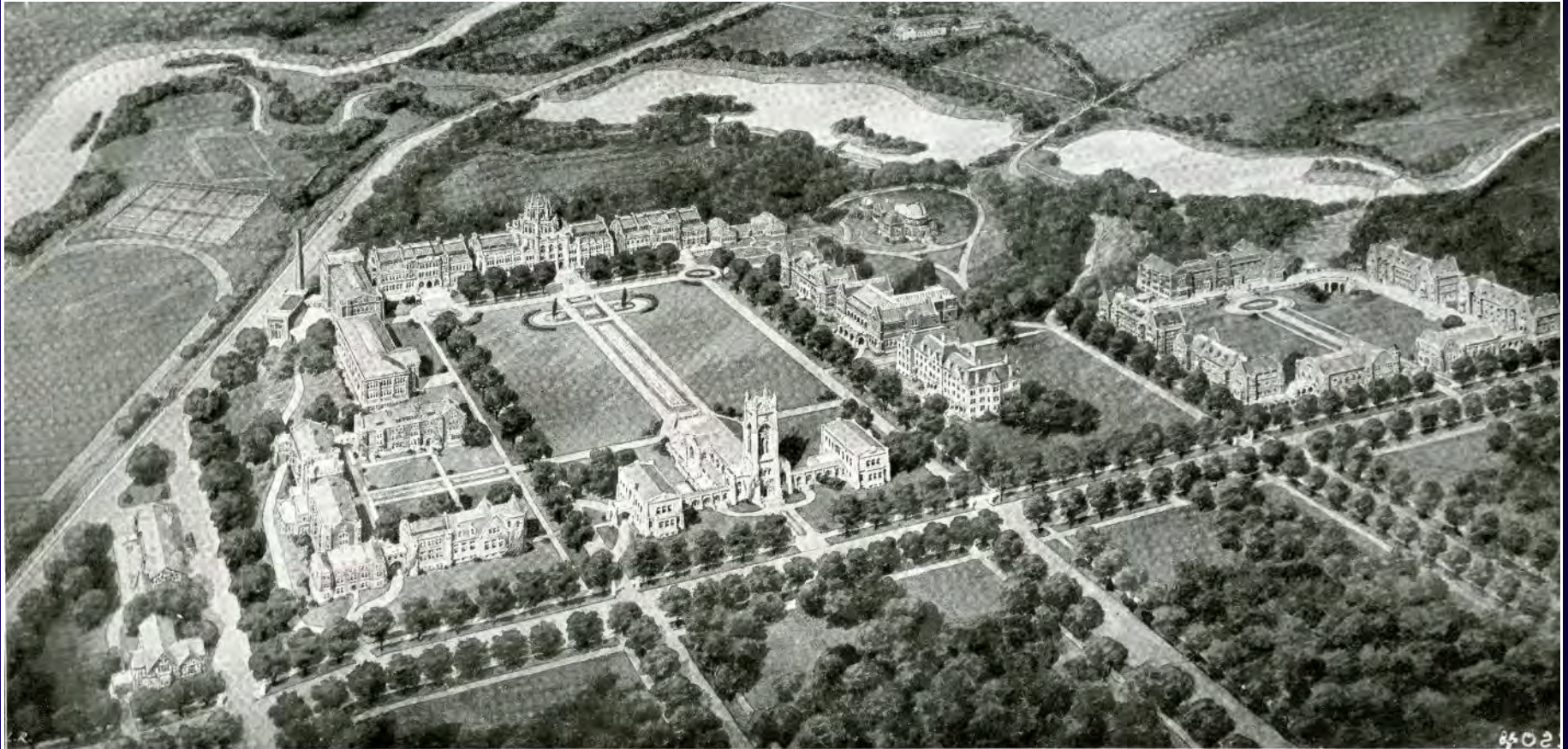


- **Long-term precinct plan for the campus**
- Investment in Science facilities
- Investment in Music and Public Events facilities
- Number, location, and size of needed classrooms
- Other needs

Our Timeline

- February 2013: Received Charge, committees appointed
- Spring 2013: Began deliberations
- Summer 2013: Hired Holabird and Root, began analysis
- Summer-Fall 2013: Campus-wide and committee discussions
- Winter 2014: Finalize recommendations; trustee input
- February 3: Presentation at Faculty Meeting
- February 14: Presentation to Board of Trustees
- February - April: Campus and Public discussions
- March - April: Preparation of final report
- April: Review by College Council
- May: Anticipated approval of final report by Board of Trustees

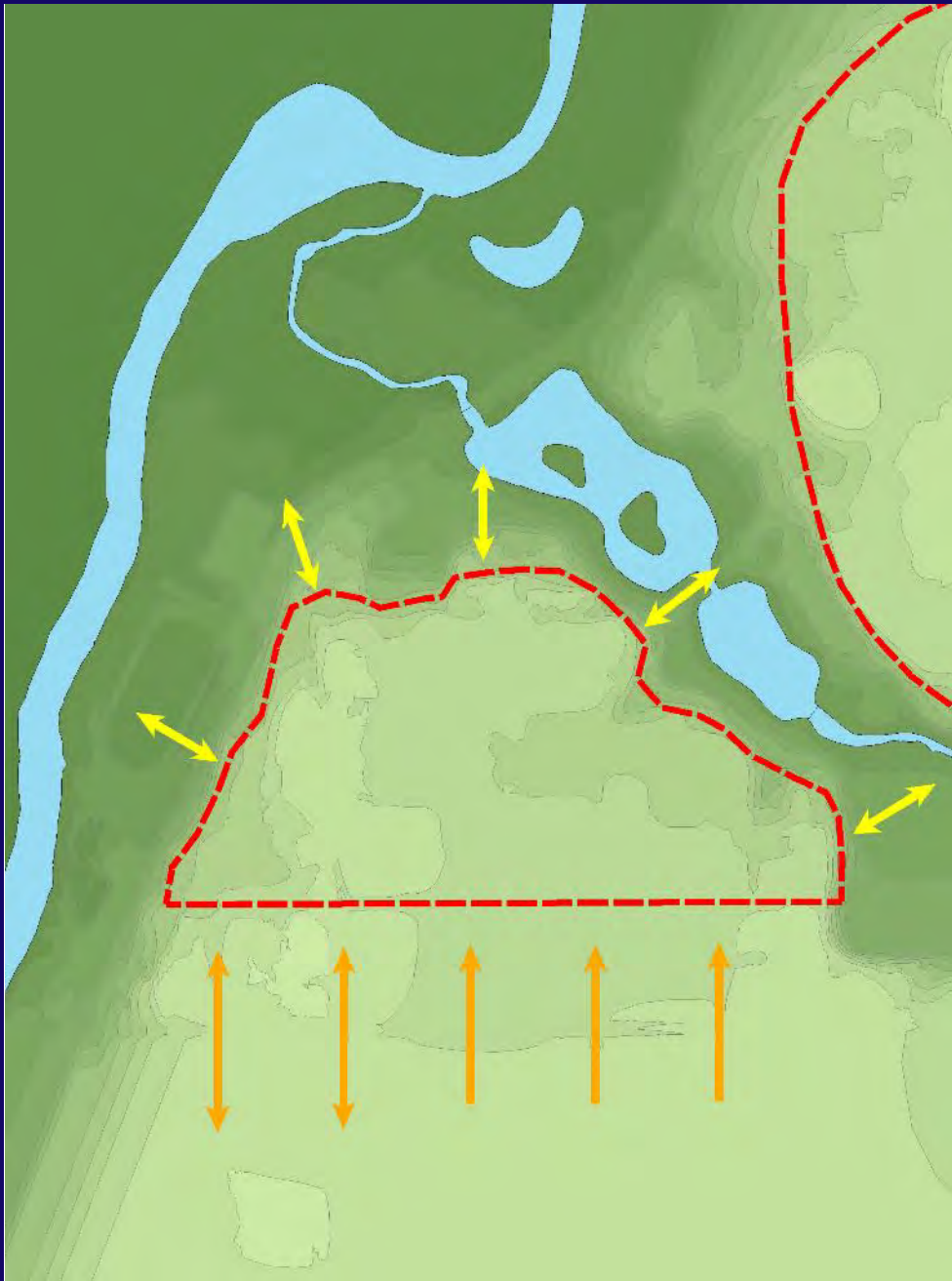
1921 Campus Plan



GROUP PLAN, CARLETON COLLEGE, NORTHFIELD, MINNESOTA

8402
HOLMES & FLINN, ARCHITECTS, CHICAGO

Existing Campus Analysis - Topography



- Plateaus define the main campus and limit northern expansion
- Ridges act as essential delineating elements that organize the placement of buildings throughout the main campus
- Street grid provides a direct connection to the community to the south

Existing Campus Analysis – Overview



- Campus arrival is not clearly defined with no clear 'entrance' or arrival point / sequence
- Axes carry neighborhood street grid into campus, establish core building placement and connect open spaces
- Zone between main campus and Weitz Center is in transition
- Limited opportunity for growth exists on the campus north of First Street

Campus Zones and Precincts



- Existing precinct organization is sound and should be preserved and strengthened.
- Campus in-fill is limited and should be very strategic, e.g. Science, Residential Life
- Long-term campus growth would move south along College Street to the Weitz Center

Zones

	Academic (with Admin)		Arboretum
	Athletic / Recreation		Chapel
	Facilities		Student Residential
	New Connector Zone		

Science & Math

Vision and Key Objectives

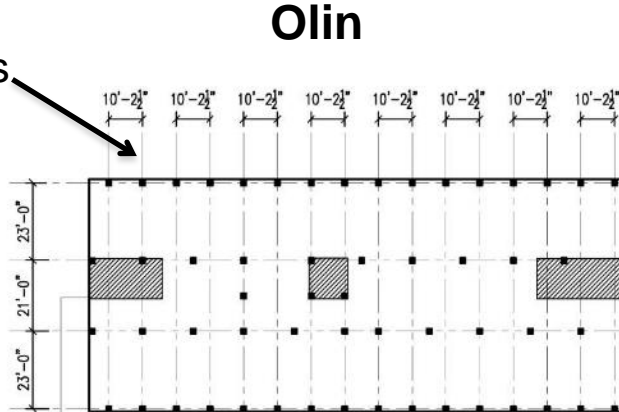
- Support integrated science education
- Support a more interdisciplinary culture
- Support student-faculty research



Physical Constraints

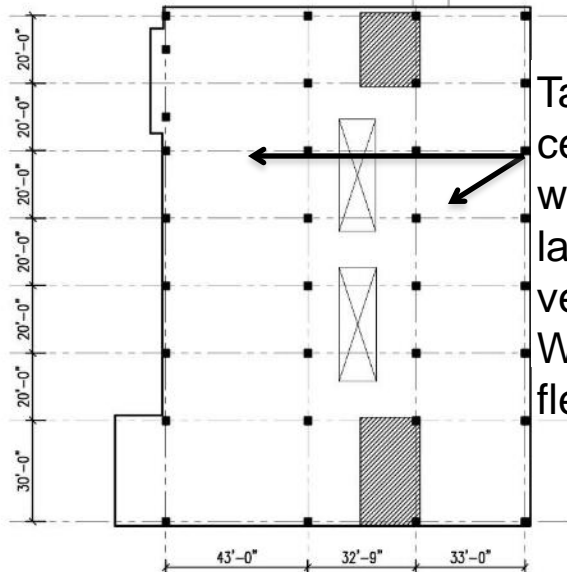
Narrow bay depths,
poorly suited for labs
and classrooms

Olin



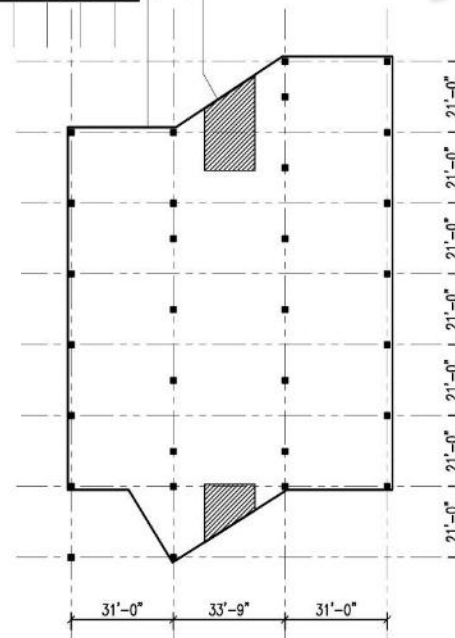
Short floor to ceiling
heights, poorly suited
for labs needing
ventilation

Hulings



Tall floor to ceiling
heights well suited for
labs needing
ventilation
Wide Bays for
flexible use

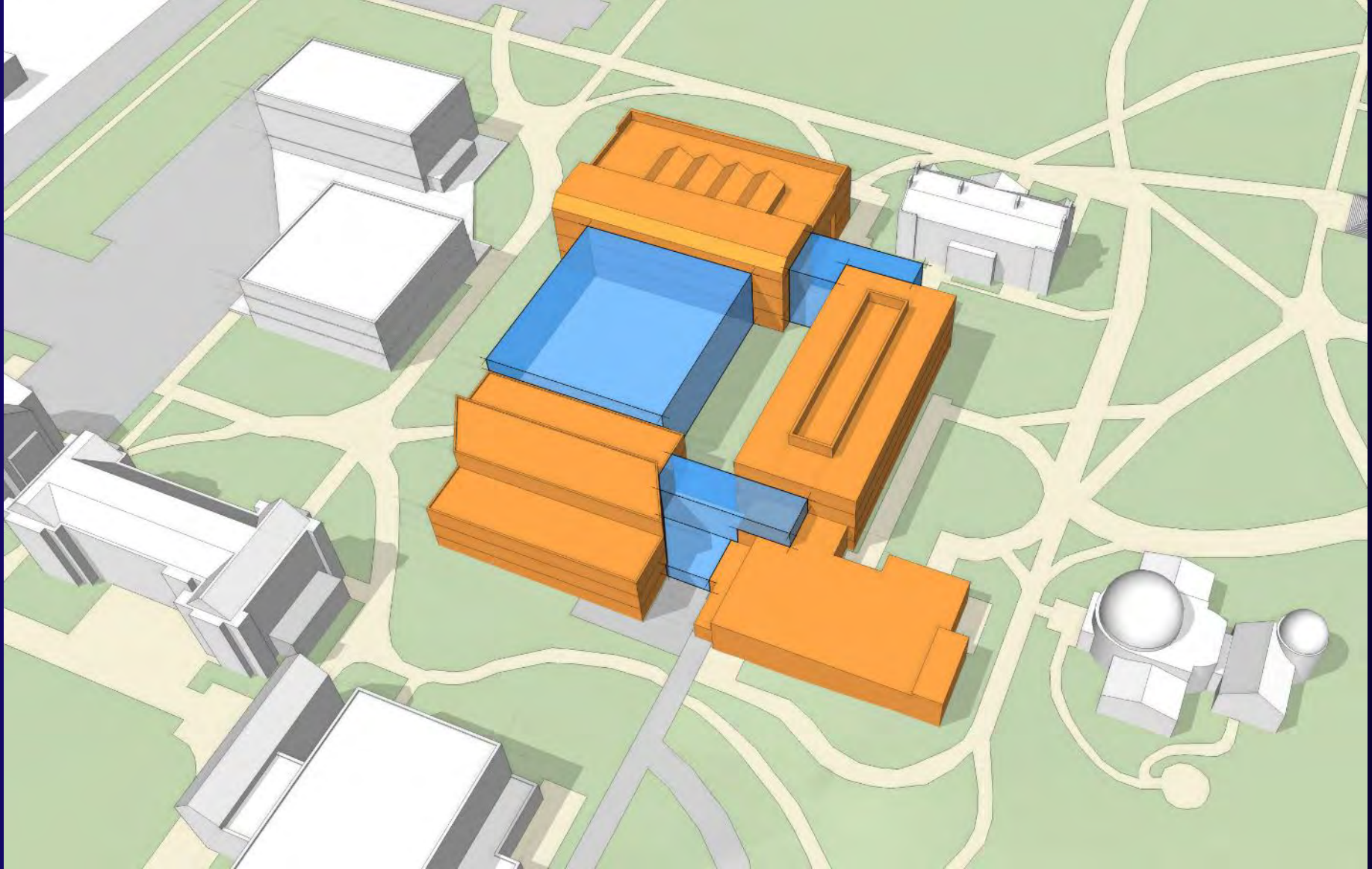
Mudd



Science & Math Recommendations

- Construction must meet two key goals:
 - create new space for infrastructure-intense uses, especially in chemistry and physics
 - further the interconnectedness of the entire science complex
- New construction should be in current science courtyard or south of current complex, connected to Hulings and Mudd.
- Targeted renovations for less infrastructure-intense uses
- 30% increase in the overall footprint of the sciences
- Consider moving Computer Science to Olin
- Retain Math and Math Skills Center in CMC

Science & Math Recommendations



Music & Public Events

Vision and Key Objectives

- Support diverse programs at multiple levels, open to all interested students
- Physical location(s) should enable a variety of musical expression and support integration across the College & within the department
- New performance space should be of high acoustic quality, accessible to the College and the Northfield community



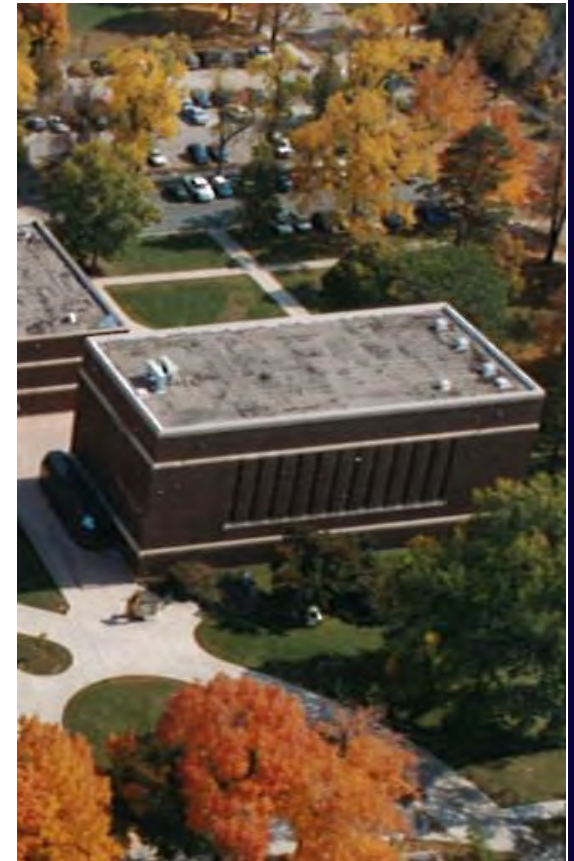
Music & Public Events Circumstances

2,200+ enrollments/year representing 30% of student body



Music & Public Events Circumstances

Three buildings:
two need renovation, one is to be demolished



Music & Public Events Recommendations

- New addition to the Weitz Center and a second building near Weitz, ideally Parish House, or perhaps new construction
 - New performance venue with stage, backstage, lighting, support
 - Additional rehearsal spaces to ensure venue availability and to accommodate co-curricular groups
 - These goals require ~10,000 nsf increase in space
 - Program is re-allocated to improve interaction and collaboration within department and across College

Music & Public Events Recommendations

- Focus Chapel on speaking events
 - Upgrade sound, lighting, and projection capabilities
 - Remove Music uses from basement
 - Attend to major maintenance issues (e.g. HVAC, accessibility, organ repairs)



Music & Public Events Recommendations



Classroom Circumstances

Following addition of Leighton classrooms and conversion of two classrooms in CMC, the number, location, and size of our classrooms generally meet our needs.



Recommendations for Other Needs

- **Scoville Hall**
 - Empty and renovate for Admissions and Financial Aid
- **Sayles-Hill remains as Campus Center**
 - Career Center and Center for Community and Civic Engagement to new location
 - Intercultural Life, Gender & Sexuality Center, Residential Life office come to Sayles-Hill
- **Residential Life**
 - More independent living units – townhomes, Co-ops
 - Move SHAC to new space; reclaim Davis for residences
 - Address loss of Parish House (if necessary)
- **Gould Library**
 - Move Academic Support Center to Library
 - Expand Archives and Special Collections

‘First blush’ Financial Estimates

Component	New Sq Ft	Renov Sq Ft	Cost/ Sq Ft New	Cost/ Sq Ft Renov	Estimated Cost
Science	65,000	60,000	\$700	\$400	\$70 M
Music	39,000	16,000	\$575	\$460	\$30 M
Total	104,000	76,000			\$100 M
Scoville		14,000		\$425	\$6 M
Indep. Living	~ 100 beds		\$150k	per bed	\$15 M
Other Projects	10,000	~ 20,000	\$600	\$400	\$14 M

Moving Ahead



Carleton Future



Thank You!

