

# Vice President and Treasurer's Organization

Vice President and Treasurer  
**Eric Runestad**

Assistant to the Vice  
President and Treasurer  
**Barbara Silk**

Director of Sustainability  
**Martha Larson**  
Total FTE: 2

Comptroller  
**Linda Thornton**  
Total FTE: 12

Director of Human  
Resources  
**Kerstin Cardenas**  
Total FTE: 7

Director of Auxiliary  
Services & Special  
Projects  
**Jesse Cashman**  
Total FTE: 98.5

Director of Security  
Services  
**John Bermel**  
Total FTE: 10

Director of Facilities &  
Capital Planning  
**Steve Spehn**  
Total FTE: 95.5

Budget Director  
**Jane Rizzo**

Manager of Environmental  
Health & Safety Compliance  
**Elisabeth Haase**  
Total FTE: 4\* \*shared w/ St Olaf

Sexual Misconduct  
Advisor & Investigator  
**Mary Dunnewold**

# Business Office

Comptroller  
**Linda Thornton**  
Total FTE: 12

Administrative Assistant  
**Brenda Schneider**

Staff Accountant  
**Karl Symons**

Payroll / Tax Manager  
**Shari Mayer**  
(supervises 1)

Accounts Receivable Manager  
**Debra Fawcett**  
(supervises 1)

Purchasing and Risk Manager  
**Randie Johnson**

Grant & Cash Manager  
**Susan Benson**

Accounts Payable  
Manager  
**Kara Lloyd**  
(supervises 2)

# Human Resources



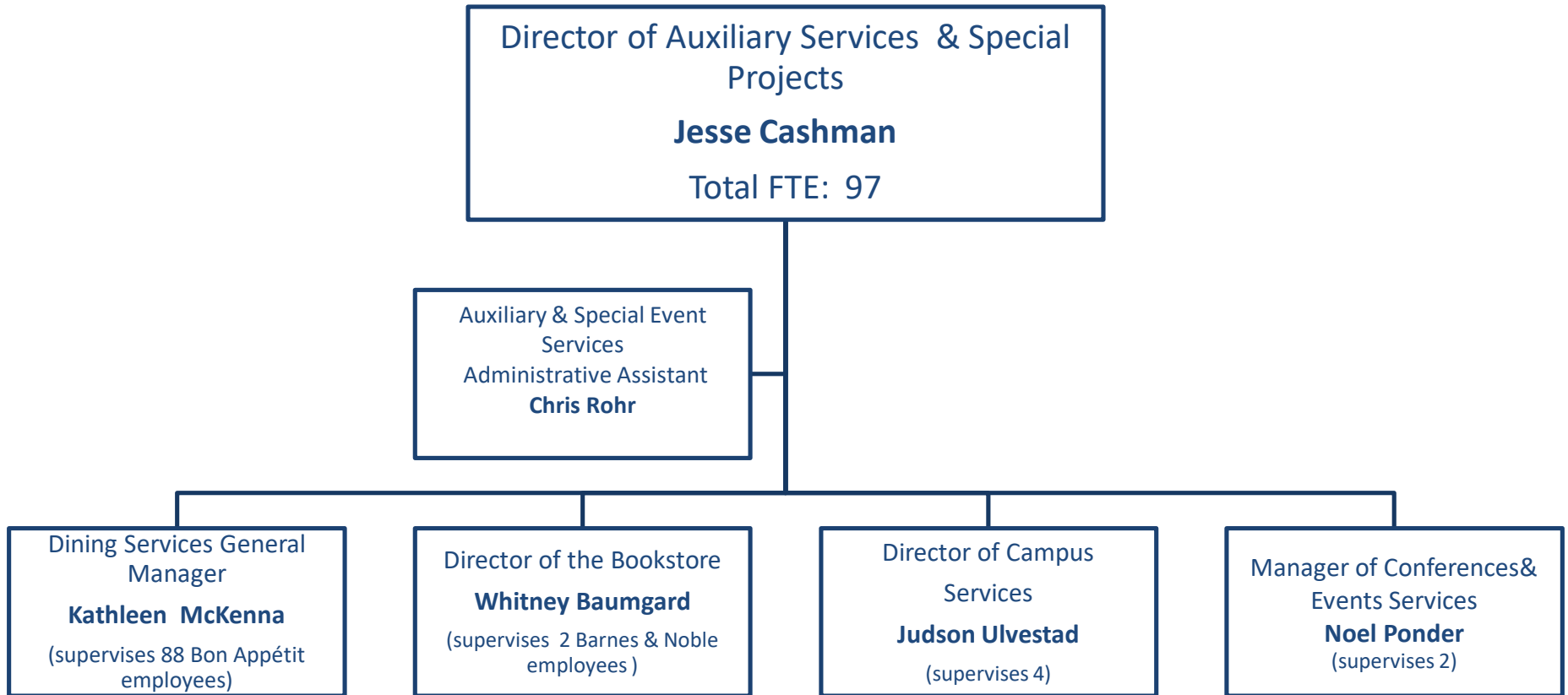
Administrative Assistant  
**Matt Bolks**

Associate Director of Human  
Recourses  
**Karyn Jeffrey**

Benefits Manager  
**Kirsten Budin**  
(supervises 1)

Human Resources Generalist  
**Maya Rutherford**  
(supervises 2)

# Auxiliary Services



# Security Services

Director of Security Services

**John Bermel**

Total FTE: 10

Assistant Director of  
Security &  
Emergency  
Management  
**Blake Held**

Security Sergeant  
**Jordan Volkert**

Security Officer  
**Luke Fridstrom**

Security Officer  
**Jim Bushey**

Security Officer  
**Klay Christianson**

Security Officer  
**Chad Drazkowski**

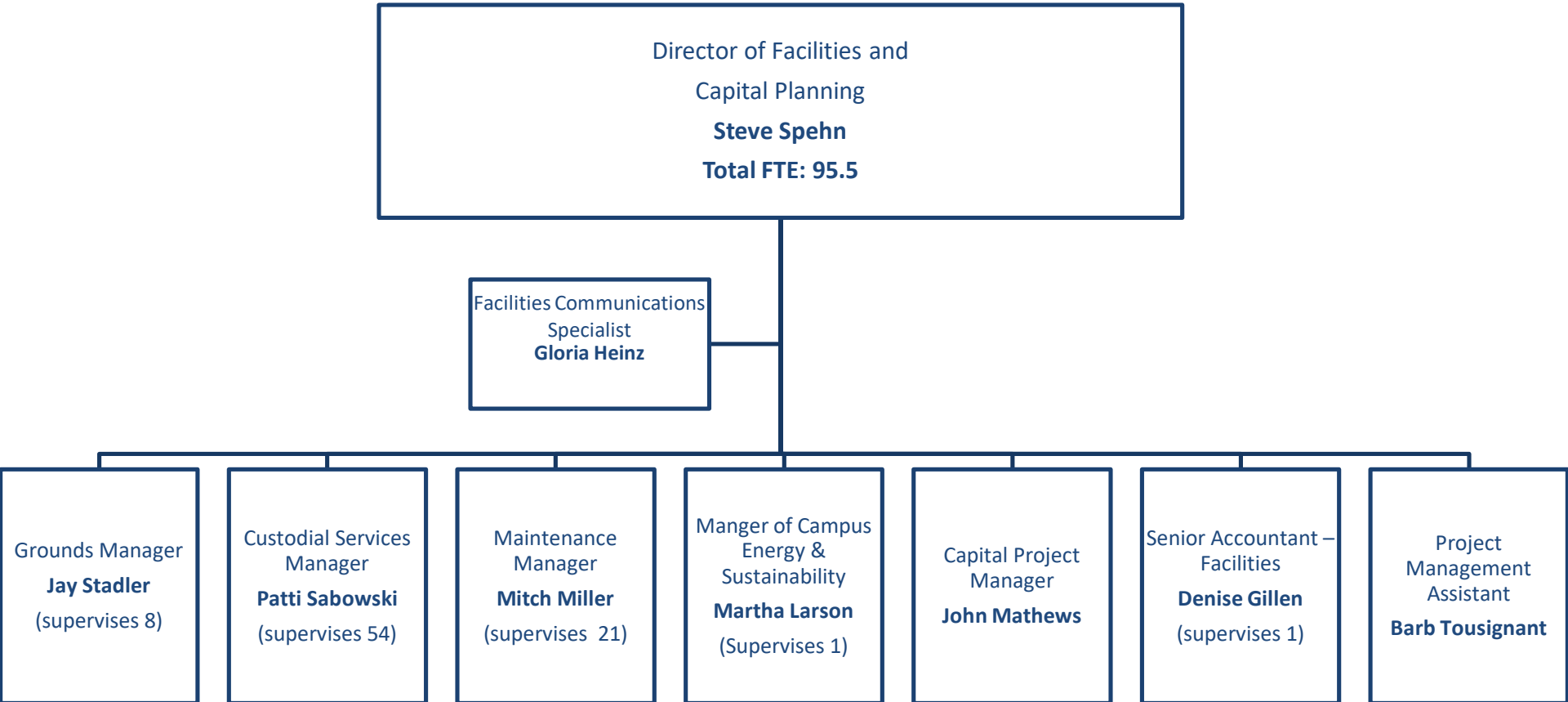
Security Officer  
**Steven Hanson**

Security Officer  
**Elliott Courchaine**

Security Officer  
**Chuck Schauss**

Security Officer  
**Christy Johnson**

# Facilities



# Environmental Health and Safety

